

THE ADVANCED COATINGS DIVISION

CHINA

Metalor Technologies (Suzhou) Ltd.
8 Zhao Yang Road
Suzhou Industrial Park
Jiangsu Province
P.R. CHINA 215123
Phone +86 512 6593 6181
Fax +86 512 6593 6171
advanced_coatings.cn@metalor.com

Dongguan Branch Office
Unit B213, Wanbao Cheng
Dezheng E. Road, Changan
Dongguan, Guangdong Province
P.R. CHINA 523856
Phone +86 769 8544 3938
Fax +86 769 8544 3933

Shanghai Liaison Office
No. 3 Building, 800 Shenfu Road,
Xinzhuang Industry Park, Minhang District
Shanghai
P.R. CHINA 201108
Phone +86 21 5442 3060
Fax +86 21 5442 0790

FRANCE

Metalor Technologies (France) S.A.S.
11, Rue Louis Aulagne
F-69600 Oullins
Phone +33 4 72 66 32 10
Fax +33 4 78 86 90 68
advanced_coatings.fr@metalor.com

HONG KONG

Metalor Technologies (Hong Kong) Ltd.
Suite 1705-9 The Metropolis Tower
10 Metropolis Drive
Hung Hom, Kowloon
Hong Kong – CHINA
Phone +852 2521 4131-5
Fax +852 2845 1791
advanced_coatings.hk@metalor.com

ITALY

Metalor Technologies (Italia) S.r.l.
Via G. Di Vittorio, 28
I-20068 Peschiera Borromeo (Milano)
Phone +39 02 5165 181
Fax +39 02 5530 1021
advanced_coatings.it@metalor.com

NETHERLANDS

**Metalor Technologies (UK) Ltd.
Netherlands Branch**
Weegschaalstraat 3
NL-5632CW Eindhoven
Phone +31 40 291 1265
Fax +31 40 291 1266
advanced_coatings.nl@metalor.com

SINGAPORE

Metalor Technologies (Singapore) Pte. Ltd.
67 Tech Park Crescent
Tuas Tech Park
Singapore 638074
Phone +65 6863 1600
Fax +65 6863 0102
advanced_coatings.sg@metalor.com

SPAIN

Metalor Technologies (Ibérica) S.A.
C/ Albasanz, 14 bis, 1ºG
E-28037 Madrid
Phone +34 91 375 7480
Fax +34 91 304 4142
advanced_coatings.es@metalor.com

SWEDEN

Metalor Technologies (Sweden) AB
Sagagatan 22
S-506 35 Boras
Phone +46 33 444 250
Fax +46 33 444 260
advanced_coatings.se@metalor.com

SWITZERLAND

Metalor Technologies SA
Rue des Perveuls 8
CH-2074 Marin
Phone +41 32 720 6111
Fax +41 32 720 6612
advanced_coatings.ch@metalor.com

TAIWAN

**Metalor Technologies (Hong Kong) Ltd.
Taiwan Branch**
6F, 101 Rei-Hu Street
Nei-Hu
Taipei, Taiwan R.O.C.
Phone +886 2 7720 7775
Fax +886 2 7720 0303
advanced_coatings.tw@metalor.com

THAILAND

**Metalor Technologies (Singapore) Pte. Ltd.
Bangkok Representative Office**
Prime State Mini Office
79/4 Moo2, 5th floor
Simakarin Road, Nongborn Pravej
TH-Bangkok 10260
Phone +66 2366 0719
Fax +66 2366 0720
advanced_coatings.th@metalor.com

UNITED KINGDOM

Metalor Technologies (UK) Ltd.
74, Warstone Lane
UK-Birmingham B18 6NG
Phone +44 121 262 3088
Fax +44 121 236 3568
advanced_coatings.uk@metalor.com

USA

Metalor Technologies USA Corporation
52 Gardner Street
USA-Attleboro, MA 02703
Phone +1 508 226 4470
Fax +1 508 695 4180
advanced_coatings.us@metalor.com

255 John Dietsch Boulevard
USA-North Attleboro, MA 02763
Phone +1 508 699 8800
Fax +1 508 695 4828
advanced_coatings.us@metalor.com

DISCLAIMER

This data sheet provides information concerning the properties, composition and use of Metalor's products. The information is provided solely as a convenience to customers. Neither this data nor any advice concerning the selection and/or use of any product shall constitute a warranty of any type, whether express or implied. ALL WARRANTIES OF MERCHANTABILITY, FITNESS FOR A PARTICULAR PURPOSE AND NON-INFRINGEMENT ARE EXPRESSLY DISCLAIMED. Nothing in this data sheet or in other information provided by Metalor shall be construed as a recommendation or inducement to produce or use any process or product in a manner that infringes any existing or future patents. All sales are made expressly subject to Metalor's standard terms and conditions which are printed on the reverse side of each invoice. Metalor shall not be responsible for any liability arising out of the processing or use of any product in a manner, process or formula not designed by Metalor.



ISO 9001
ISO 14001
ISO 13485



STS 478
ISO 17025



LBMA
GOOD DELIVERY
MEMBER

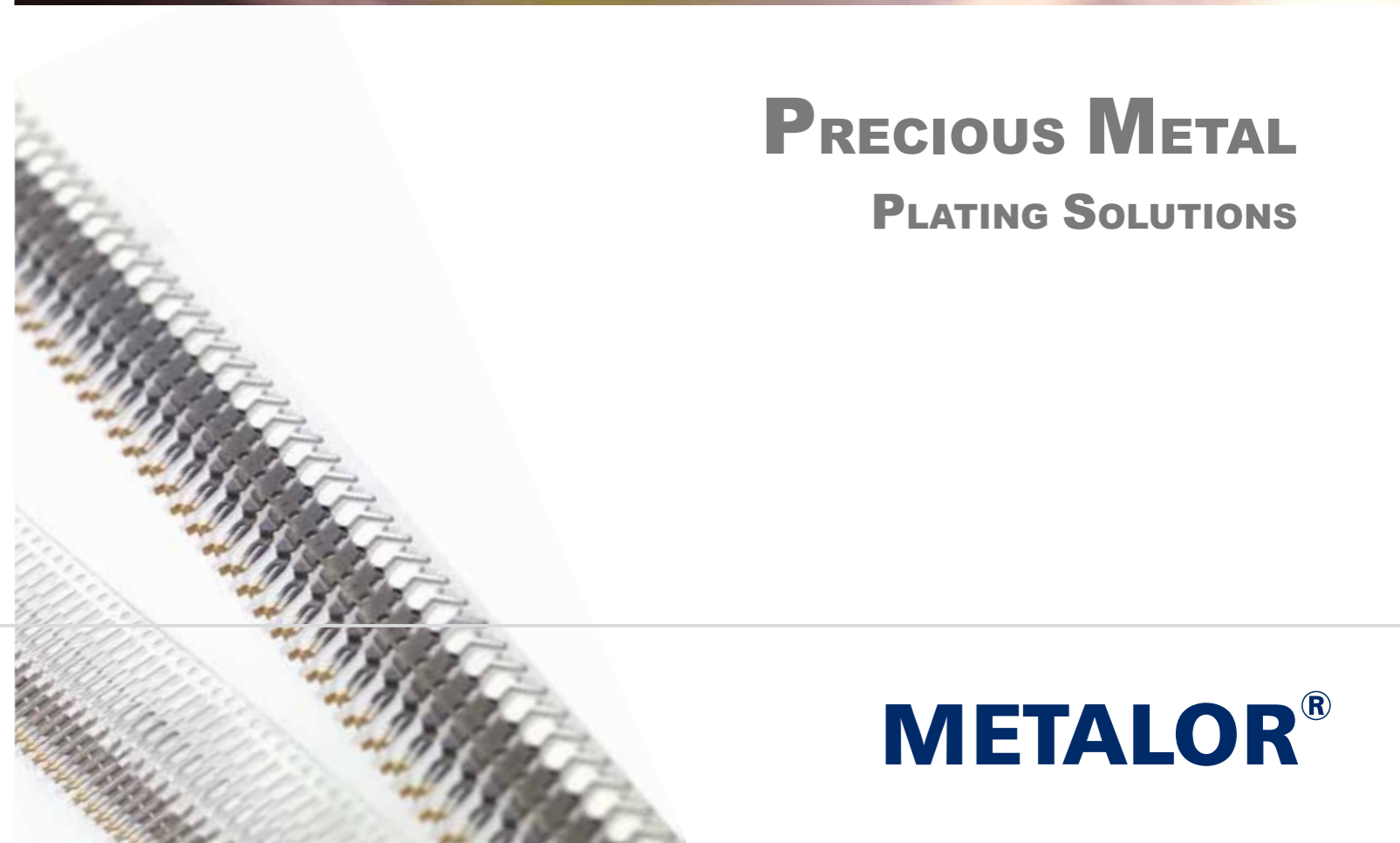
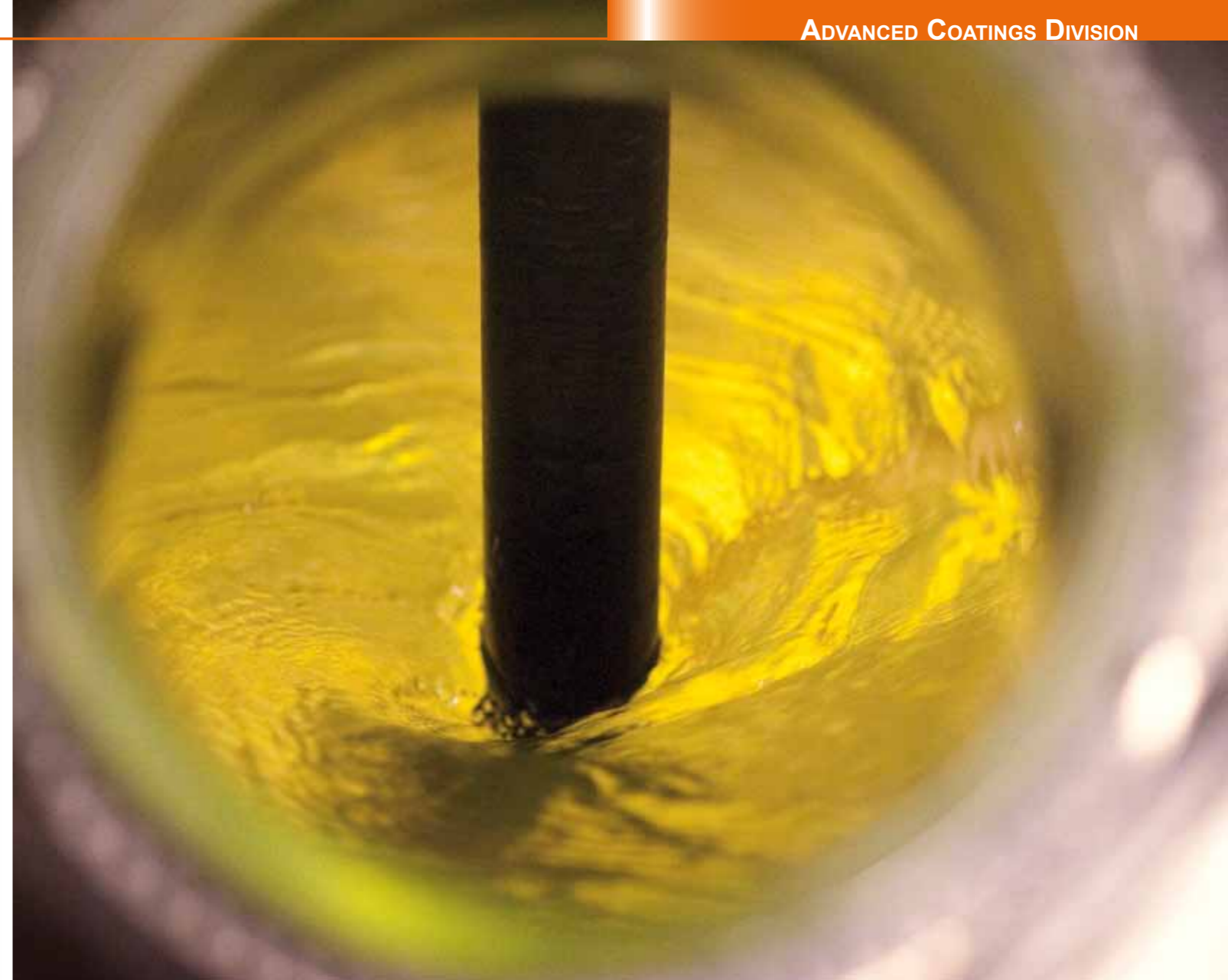


LPM
LONDON
PLATINUM &
PALLADIUM
MARKET

Metalor Technologies SA
Avenue du Vignoble, CH-2009 Neuchâtel
Tel. +41 (0) 32 720 61 11, Fax +41 (0) 32 720 61 12
advanced_coatings@metalor.com, www.metalor.com

METALOR®

METALOR®



**PRECIOUS METAL
PLATING SOLUTIONS**

MTEP06-EN06 10

Process Name	PDS no.	PM Content g/l	Temperature °C	Current Density A/dm ²	Hardness (Vickers)	pH	Decorative	Industrial	Other	Application	Features
--------------	---------	----------------	----------------	-----------------------------------	--------------------	----	------------	------------	-------	-------------	----------

GOLD PROCESSES

MetClad 2000 Series	0007	2 - 4	25 - 40	0.8 - 1	160 - 220	3.5 - 4.2	●			Luxury costume jewellery and leather fittings	Cyanide based, 23 - 24 karat gold deposits, wide colour range, mix 'n' match, nickel-free version
MetClad CDF I 18K	0703	4	70	0.5 - 1.5	250 - 350	10.5	●			Quality costume jewellery, watch cases	Cyanide based, copper brightened corrosion resistant
MetClad Rose	0048	4.5	55	1.5	300 - 350	5	●			General decorative plating	Cyanide based, colour close to 5N
MetForm 18P	0033	6	70	1	200 - 400	10.5	●			Electroforming, conventional electroplating	Cyanide based, alkaline system for gold, copper, cadmium alloy
MetGild 2000 Series	0001	0.5	55	2	140 - 220	10.5	●			Gilding and flash	Cyanide based, cobalt, nickel, indium, zinc, iron, copper, silver brightened (Swiss standard), mix 'n' match
MetGold 2010 B Series	0087/0094	2 - 3	35	0.5	140 - 180	4.5		●		Connectors	Cyanide based, acidic cobalt/nickel brightened barrel process, improved thickness distribution
MetGold 2010 HS Series	0086/0093	6 - 10	55	1 - 60	140 - 180	4.7		●		Connectors	Cyanide based, acidic cobalt/nickel brightened high speed process, improved thickness distribution
MetGold 2010 VBS Series	0088/0095	1.5 - 4	38	0.1	140 - 180	4.3		●		Connectors	Cyanide based, acidic cobalt/nickel brightened vibrobot process, improved thickness distribution
MetGold 2010 VR Series	0085/0092	3.5 - 6	35	1	140 - 180	4.7		●		Connectors, PCBs	Cyanide based, acidic cobalt/nickel brightened vat/rack process, improved thickness distribution
MetGold 2010C (HS) RPC	0943	6 - 18	55	1 - 60	140 - 180	4.7		●		Connectors, lead frames	Cyanide based, acidic cobalt brightened high speed process, pore reduction
MetGold 3000 Series	0894/0893	2 - 8	25 - 50	0.2 - 1	140 - 180	4.6		●		Connectors	Cyanide based, acidic cobalt/nickel brightened system, barrel, rack and high speed
MetGold 3010C (HS)	1023	4 - 15	55	1 - 50	140 - 190	4.2		●		Connectors	Cyanide based, cobalt hardened high speed acid gold with minimized immersion
MetGold ECF60 Series	0154	8 - 12	55	2	60 - 200	9.5			●	Thinfilm circuits, solid items requiring good throw, microwave devices	Sulphite based, cyanide free
MetGold ECF64D	0149	12 - 18	50	0.3	120 - 180	9.1			●	Dental	Sulphite based, cyanide free
MetGold IG Ni Series	0137/0138	1 - 6.8	90 - 95	---	---	5 - 5.2			●	Solderability protection, SMD, microelectronic circuits	Cyanide based, immersion process for thin gold coatings with nickel underplate
MetGold Pure Series	0083	4 - 12	60	0.1 - 1	90 - 140	6		●		Glass-to-metal seal connectors, microwave devices, thinfilm circuits, electronic	Cyanide based, pure gold process, neutral pH, semi-metal additives
MetSign W	0665	4	60	0.5	240	9.5	●			General decorative	Sulphite based, cyanide free, 20 karat gold alloy



Process Name	PDS no.	PM Content g/l	Temperature °C	Current Density A/dm ²	Hardness (Vickers)	pH	Decorative	Industrial	Other	Application	Features
--------------	---------	----------------	----------------	-----------------------------------	--------------------	----	------------	------------	-------	-------------	----------

SILVER PROCESSES

MetSil 90	0195	36	20	1.4	120	---	●	●		General decorative and electrical, connectors, microwave boxes, cutlery	Cyanide based, mirror bright, haze-free pure silver deposits
MetSil 91	0209	50	20	15	90	---		●		Wire plating contacts, semiconductors	Cyanide based, semi-bright, high speed, alkaline process
MetSil 150	0197	36	20	1.5	120	---	●	●		General applications	Cyanide based, organically brightened, haze-free pure silver deposits
MetSil 500 CNF	1051	30	25	0.5	100 - 130	8.5	●	●	●	General applications, photovoltaic cells	Cyanide free
MetSil 2010 Series	0211	65	45 - 60	≤80	100 - 130	8.5		●		Spot plating on lead frames	Cyanide based, selenium brightened, wire bondable silver (matt to bright possible)
MetSil Dec	0198	36	20	1.4	120	---	●	●		Decorative and general applications	Cyanide based, non-metallic brightened, rack and barrel plating
MetSil HCD	0212	65	65	45 - 185	100 - 120	8.5		●		Semiconductors, spot plating on lead frames	Cyanide based, slightly alkaline, very high speed
MetSil Protect 200	0225	---	60	---	---	7			●	Passivation of silver plated products	Excellent immersion protection to tarnishing

PALLADIUM PROCESSES

MetPal 2000B	0163	2	25	0.5	400 - 550	8	●	●		General decorative, costume jewellery, electronic	Nickel-free, neutral to mildly acidic process for pure palladium plating of flash deposits
MetPal EPD	0193	4	50	---	400 - 550	2			●	PCB, direct metallization of copper and solder pads	Sulphate based, electroless pure palladium process
MetPal GB1	0164	2 - 12	55	1	400 - 550	7.5	●			General decorative	Nickel-free, neutral to mildly alkaline process for pure palladium plating of white, bright deposits
MetPal I B	0967	8	20	0.25	400 - 550	8	●	●		General decorative and technical	Chloride based palladium-nickel process for rack or barrel plating
MetPal I D	0171	10	25	1	400 - 550	8.4	●			General decorative	Chloride based palladium-nickel process for vat, rack or barrel plating
MetPal I HS	0184	20	35	3 - 50	400 - 550	8		●		Connectors, semiconductors	Chloride based palladium-nickel process for high speed, dip selective or jet plating
MetPal II HS	0182	20	35 - 55	3 - 50	400 - 550	7.5		●		Connectors, semiconductors	Low ammonia palladium-nickel process for high speed plating
MetPal III Pd-Ni HS	0183	20	65	42	400 - 550	4		●		Connectors, semiconductors	Patented ammonia and chloride-free palladium-nickel plating system, covers low to high speed
MetPal III Pd-Ni V&B	0653	4	70	2	400 - 550	4	●	●		General decorative and electronic	Patented ammonia- and chloride-free palladium-nickel plating system, vat or barrel
MetPal III Pure Pd Deco	0769	4	55 - 75	2	400 - 550	4	●			Jewellery, general decorative	Patented ammonia- and chloride-free plating system
MetPal III Pure Pd Strike	0737	2	70	5	400 - 550	4		●		Connectors, semiconductors	Patented ammonia- and chloride-free plating system for high speed plating

Process Name	PDS no.	PM Content g/l	Temperature °C	Current Density A/dm ²	Hardness (Vickers)	pH	Decorative	Industrial	Other	Application	Features
--------------	---------	----------------	----------------	-----------------------------------	--------------------	----	------------	------------	-------	-------------	----------

PLATINUM PROCESSES

Met-Pt 200S	0771	2 - 10	25 - 70	0.5 - 10	400	1	●	●		Variety of substrates under a variety of conditions	Bright and hard deposits
Met-Pt 209 / Met-Pt P	0258	5	85	2 - 8	400 - 500	8.5		●		Aerospace turbine blades, titanium anodes	Matt, adherent, low-stressed deposits

RHODIUM PROCESSES

Met-Rh 225	0248	5	55	0.3 - 1.1	700 - 950	<1		●		General electronic, PCB sectors, reed switches	Sulphate based, hard, ductile and crack-free deposits, matt to semi-matt deposits
Met-Rh Diamond	0237	2	25 - 30	3	800 - 900	<1	●			Jewellery, costume jewellery, leather fittings, gift items, spectacle frames	Sulphate based, bright extra white flash and high thickness deposits
Met-Rh Infinity White	0643	2	40 - 50	3	800 - 900	<1	●			Jewellery, costume jewellery, leather fittings, gift items, spectacle frames	Sulphate based, bright extra white flash and high thickness deposits
Met-Rh S100	0246	2	45	1.5	900	<1	●	●		General decorative, industrial, electronic, PCB sectors, reed switches	Sulphate based, flash and high thickness deposits
Met-Rh S501G	0239	2	25	1	800 - 1000	<1	●			Jewellery, costume jewellery, leather fittings, gift items, spectacle frames	Sulphate based, dark grey deposits
Met-Rh S503W	0772	1.6 - 4.5	20 - 43	1	800 - 900	<1	●	●		General decorative, industrial	Sulphate based, ultra white, bright and hard deposits for flash and high thickness deposits
Met-Rh S504B	0662	2	30	1	800 - 900	<1	●			Jewellery, costume jewellery, leather fittings, gift items, spectacle frames	Sulphate based, dark grey deposits with blue aspect

RUTHENIUM PROCESSES

Met-Ru 2000	0262	3 - 20	50 - 70	0.5 - 2	600 - 900	1 - 1.5	●			General decorative	Hard, bright mirror type deposits, mix 'n' match, from grey to dark grey
Met-Ru 2001	1052	4 - 10	70	1 - 10	800 - 900	1.7		●		High load and low voltage applications, such as reed switches	Excellent corrosion and wear resistance, low stress deposits
Met-Ru 3000 Black	1019	5	60 - 70	3 - 5	500 - 800	0.1 - 0.5	●			General decorative	Bright and extra black deposits

BASE METAL PROCESSES

MetWhite 100	0302	---	60	1 - 4	400 - 500	<12	●	●		Decorative and electronic components	Cyanide based, white bronze, substitute for nickel as barrier layer or final contact finish
MetTreat 100	0322	---	18	---	---	<12			●	Immersion stripping of gold from copper, copper alloys, nickel and nickel alloys	Alkaline system in salt form with minimum attack on the base metal
MetTreat 200	0861	---	50	---	---	<12			●	Immersion stripping of gold from many alloys	Alkaline system in solution form with minimum attack on the base metal
MetTreat 300	1044	---	70 - 80	---	---	<1			●	Electrolytic stripping of rhodium from white gold alloys	Acidic system with minimum attack on the base metal